

HOW BUSINESS ARCHITECTURE BREAKS DOWN AND BRIDGES SILOS

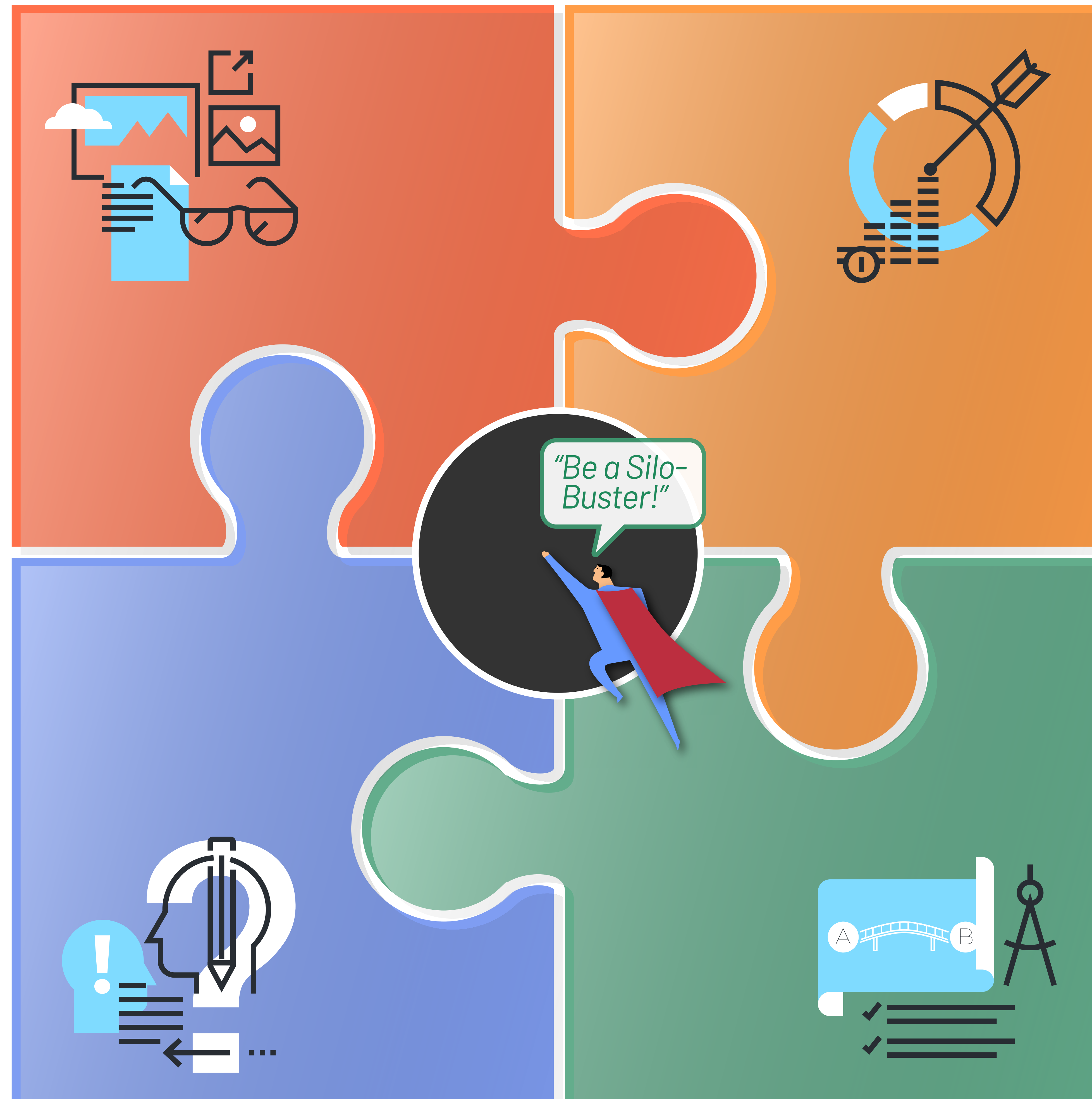
As siloed mindsets and behavior increase, economic performance decreases. Here are a few ideas for silo bridging and busting, along with how business architecture can help.

PROVIDES THE BIG PICTURE

- ✓ Business architecture provides a shared and common context, language and mental model of an entire organization.
- ✓ Provides a shared vocabulary and understanding of where stakeholders fit into the bigger picture – and what happens upstream and downstream.
- ✓ Standardizes information concepts so that data can be standardized, aggregated and confidently relied upon for decision-making.

IMPROVES MINDSET

- ✓ Business architecture does not change culture or mindset directly, but it provides the facts and transparency to illuminate where silos still exist so they can be addressed appropriately.
- ✓ As a truly shared enterprise business framework, it also provides a way for people to come together in support of something bigger than themselves to serve customers and the organization's mission.



CREATES A SHARED PURPOSE

- ✓ Business architecture can be used to clarify and translate business direction.
- ✓ It helps by reflecting an organization's objectives, tied to the value streams, capabilities and initiatives (as well as many other things) required to make them actionable.
- ✓ This information may be represented in a target state architecture(s) and strategic roadmap(s) that helps everyone understand how they need to contribute to the bigger picture goals.

IDENTIFIES WHERE TO REMOVE OR BRIDGE SILOS

- ✓ Business architecture and its connection to an organization's operating model provides an ideal enterprise business lens with which to identify opportunities to remove or bridge silos
- ✓ EXAMPLE: Value streams can provide an additional construct to help people work together across business units towards a greater goal of delivering value. Value streams and capabilities together can illuminate opportunities for sharing expertise, processes or tools.
- ✓ Leveraging business architecture for initiative prioritization and scoping can ensure that the right investments are made, shared solutions are leveraged where appropriate, and that the right stakeholders, sequence and integration points between initiatives are identified upfront.



transformation



Diagram by S2E Transformation (www.s2etransformation.com). This work is licensed under a Creative Commons Attribution 4.0 International License. You may copy, distribute, display and make derivative works. We only ask in return that you give credit to S2E Transformation Inc.